



STEEL AND METAL
BANDSAW MACHINES
MÖSSNER REKORD



MÖSSNER BANDSAW MACHINES

100 YEARS EXPERIENCE IN CUTTING



For good reason Mössner Bandsaw Machines are used in all sectors of industry, mainly in the metal processing industry, for a wide range of cutting solutions.

Stable and low-vibration machine bodies, a powerful and at the same time efficient drive, solid mechanics, electronics and workmanship are characteristic features of all Mössner Bandsaw Machines. Thereby our machines guarantee a smooth run and thus long service life and durability.

Mössner REKORD standard machines are exclusively designed and manufactured in our plant in Eschach representing quality "made in Germany".

Our bandsaw machines are constructed for universal use, providing flexibility due to a large range of accessories and special equipment so that the machine can be specifically equipped for your requirements.

Do you need to cut special dimensions, workpieces or materials?
Our testing department is at your disposal to cut your workpieces.

Our objective is to design our bandsaw machine as efficient as possible by means of tools and special equipment to find an optimum solution for your specific needs.

Our team is ready to give advice on your particular demands – just call us!

YOUR CONTACT AT MÖSSNER

August Mössner GmbH + Co. KG
Hohenstaufenstraße 3
73569 Eschach - Germany

Phone +49 (0)7175 99806-0
Fax +49 (0)7175 99806-41
Website: www.moessner-kq.de



Sales Department
Standard Bandsaw Machines

Mrs. Simone Hieber
Phone no.: +49 (0)7175 99806-39
Email: SimoneHieber@moessner-kq.de

Sales Department
Special-purpose Machines

Mr. Marco Schulz
Manager Technical Sales
Phone no.: +49 (0)7175 99806-62
Email: MarcoSchulz@moessner-kq.de

Mr. Philipp Staudenecker
Phone no.: +49 (0)7175 99806-69
Email: PhilippStaudenecker@moessner-kq.de

Mr. Julian Holubar
Phone no.: +49 (0)7175 99806-21
Email: JulianHolubar@moessner-kq.de

Mr. Michael Munz
Phone no.: +49 (0)7175 99806-11
Email: MichaelMunz@moessner-kq.de

Internal Sales Department

Mrs. Christina Necker
Phone no.: +49 (0)7175 99806-12
Email: ChristinaNecker@moessner-kq.de

Mrs. Martina Krebs
Phone no.: +49 (0)7175 99806-72
Email: MartinaKrebs@moessner-kq.de

Spare Parts Sales

Mrs. Sonja Vix
Phone no.: +49 (0)7175 99806-30
Email: SonjaVix@moessner-kq.de

Mrs. Simone Markowetz (Export)
Phone no.: +49 (0)7175 99806-43
Email: SimoneMarkowetz@moessner-kq.de

Mrs. Susanne Schmid (Export)
Phone no.: +49 (0)7175 99806-77
Email: SusanneSchmid@moessner-kq.de

OUR PARTNERS WORLDWIDE



Reich Companies

PO BOX 218-4850, Commerce Drive
35173 Trussville Alabama, USA

Phone 001.205.655.2121

Fax 001.205.655.2123

email@reichcompanies.com

www.reichcompanies.com



AB Systemverktyg

Johan Skyttes väg 201
125 34 Älvsjö, Sweden

Phone +46-8999200

Fax +46-87492815

<http://www.systemverktyg.se/>



VANHOORN MACHINING

Van Hoorn Machining

De Run 4338
5503 LN Veldhoven, Netherlands

Phone: +31 40-2540907

Fax: +31 40-2546788

info@vanhoornmachining.com

www.vanhoornmachining.com



Beijing RHX

Technology Development Co. Ltd.
Room 103, NO.215, Anshun Street,
Tongzhou District
Beijing 101100, China

Phone +86-10-51349892

Fax +86-10-51349893

yuyanqi@rhx.com.cn

www.rhx.com.cn



SPRINGMANN

Werkzeugmaschinen / Machines-outils

Springmann Austria

Runastraße 90
6800 Feldkirch

Phone +43 5522 70960

Fax +43 5522 70965

Feldkirch@springmann.at

Springmann Switzerland

Route des Falaises 110, 2008 Neuchâtel
Phone +41 32 729 1122, Fax +41 32 725
0101

neuchatel@springmann.ch

Staatsstraße 10, 9246 Niederbüren
Phone +41 71 424 2600, Fax +41 71 424
2660

niederburen@springmann.ch

<http://www.springmann.com/f/homepage.php>

OVERVIEW BANDSAWS MÖSSNER REKORD

PRODUCT PORTFOLIO



Bandsaw type	Cutting speed m/min.		Standard tables		Max. Throat		Dimensions machine L x W x H mm	Motor power kW
	Shift transmission	Flange bearing	Dimensions mm	Load max. kg	Height mm	Width mm		
SSF420	12-2000		600 x 600	150	230	410	1215 x 750 x 1860	2.2
SSF520	22-150 and 338-2280	500-2000	740 x 785	250	520	510	1565 x 970 x 2600	5.5
SSF630	27-142 and 410-2200	500-2000	740 x 785	250	460	605	1820 x 970 x 2560	5.5
SSF630 reinforced	30-180 and 342-2000	500-2000	740 x 785	250	460	605	1820 x 970 x 2560	11
SSF801	26-180 and 290-2000	500-2000	960 x 1000	750	670	785	2240 x 1080 x 3000	11
SSF1600	22-150 and 338-2280	500-2000	740 x 785	250	400	1600	3100 x 1060 x 2320	5.5

STEEL AND METAL BANDSAW MACHINES

MÖSSNER REKORD SSF420



Technical details:

- Bandsaw machine column in stable grey cast construction
- Cutting speed infinitely variable by shift transmission, frequency converter and AC motor
- Band tension indication
- Work table inclinable (to the right side approx. 30° and to the left side approx. 15°)
- Exchangeable aluminium wheels with vulcanised hard rubber coating
- Swivelling upper wheel
- Complete electrical execution according to the usual VDE regulations
- Position switch for safety of the protection doors
- Jaw guides for saw blades with one pair hard metal fitted guidance inserts for 10 mm wide and 0,9 mm thick (other dimensions available on request)
- 1 bi-metal saw blade
- Roller guidance for saw blades with one set guidance wheels for 10 mm width of saw blade
- 1 set of operating tools
- Machine according to the valid regulations and with CE-mark
- Colour: RAL 7035 light grey, doors RAL 5005 signal blue

Technical specifications:

Voltage:	Volt/Hertz	400 / 50
(other voltage against extra cost)		
Range of cutting speed:	m/min	12-2000
Wheel diameter:	mm	420
Table size:	mm	600 x 600
Max. payload table:	kg	150
Throat width:	mm	410
Throat height:	mm	230
Motor power:	kW	2.2
	Volt/Hertz	230 / 400 / 50
	1/min	1500
Dimensions L x W x H:	mm	1215 x 750 x 1860
Net weight:	approx. kg	680

STEEL AND METAL BANDSAW MACHINES

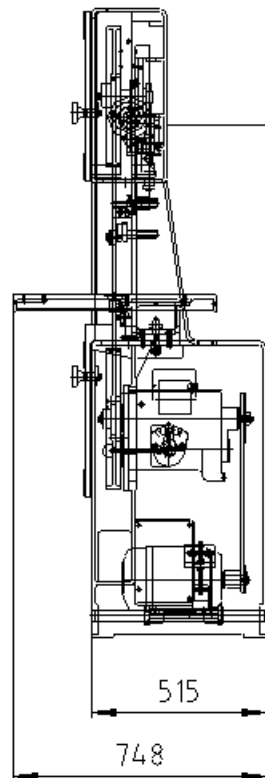
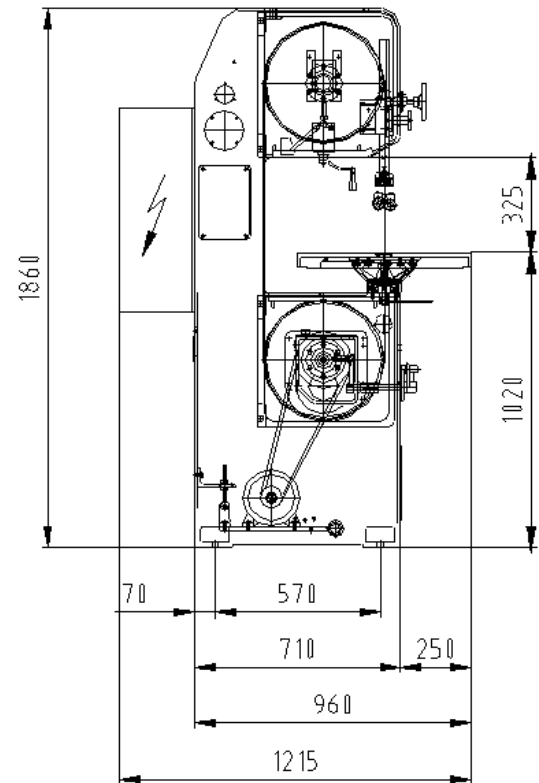
MÖSSNER REKORD SSF420



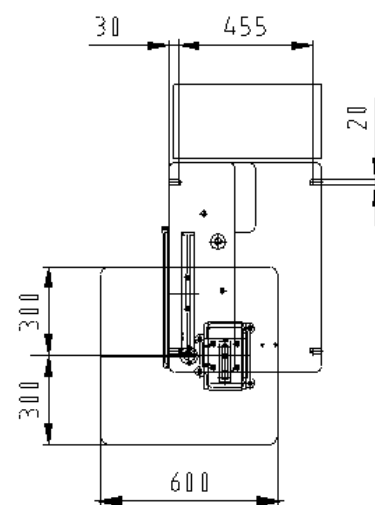
Product pictures / drawings



Picture shows special equipment



Top view



STEEL AND METAL BANDSAW MACHINES

MÖSSNER REKORD SSF520



Technical details:

- Bandsaw machine column in stable grey cast construction
- Cutting speed infinitely variable by shift transmission, frequency converter and AC motor or with flange bearing and frequency converter
- Mechanical band tension device with hydraulic indication
- Work table inclinable (to the right side approx. 30° and to the left side approx. 15°)
- Exchangeable aluminium wheels with vulcanized hard rubber coating
- Swivelling upper wheel
- Complete electrical execution according to the usual VDE regulations
- Position switch for safety of the protection doors
- Jaw guides for saw blades with one pair hard metal fitted guide inserts for 13 mm width and 0,9 mm thickness of blade (other dimensions by request)
- Roller guidance for saw blades with one set of rollers 20 mm width of saw blade
- 1 bi-metal saw blade
- 1 set of operation tools
- Machine according to the valid regulations and with CE-mark
- Colour: RAL 7035 light grey, doors RAL 5005 signal blue

Technical specifications:

Voltage:	Volt/Hertz	400 / 50
(other voltage against extra cost)		
Range of cutting speed shift transmission:	m/min.	22-150 and 338-2280
Range of cutting speed flange bearing:	m/min.	500 – 2000
Wheel diameter:	mm	520
Table size:	mm	740 x 785
Max. payload table:	kg	250
Throat width:	mm	510
Throat height:	mm	520
Motor power:	kW	5.5
	Volt/Hertz	400/690/50
	1/min	1500
Dimensions L x W x H:	mm	1565 x 970 x 2600
Net weight:	approx. Kg	1100

STEEL AND METAL BANDSAW MACHINES

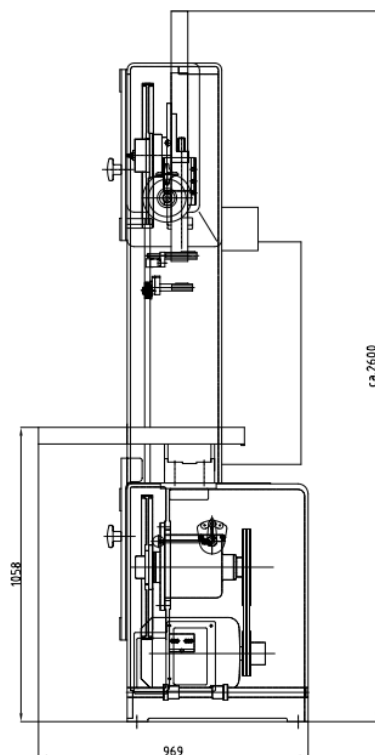
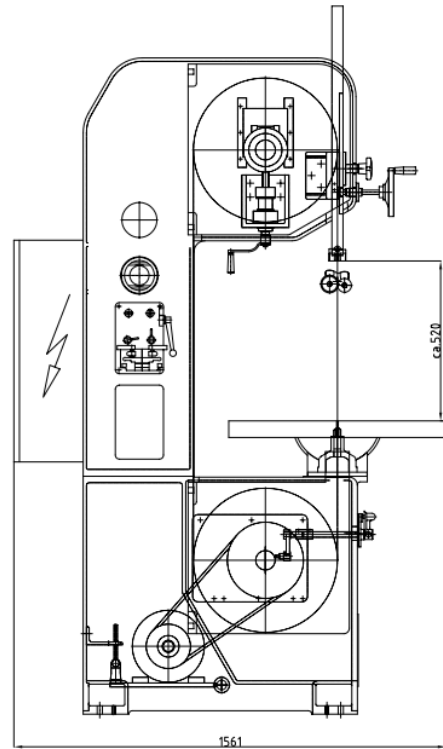
MÖSSNER REKORD SSF520



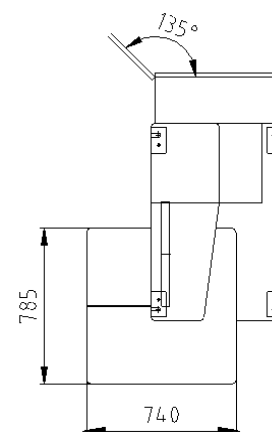
Product pictures / drawings



Picture shows special equipment



Top view



STEEL AND METAL BANDSAW MACHINES

MÖSSNER REKORD SSF630



Technical specifications:

- Bandsaw machine column in stable steel construction
- Cutting speed infinitely variable by shift transmission, frequency converter and AC motor or with flange bearing and frequency converter
- Mechanical band tension device with hydraulic indication
- Work table inclinable (to the right side approx. 30° and to the left side approx. 15°)
- Exchangeable aluminium wheels with vulcanized hard rubber coating
- Swivelling upper wheel
- Complete electrical execution according to the usual VDE regulations
- Position switch for safety of the protection doors
- Jaw guides for saw blades with one pair hard metal fitted guide inserts for 13 mm width and 0.9 mm thickness of blade (other dimensions by request)
- Roller guidance for saw blades with one set rollers for 20 mm width of saw blade
- 1 bi-metal saw blade
- 1 set of operating tools
- Machine according to the valid regulations and with CE-mark
- Colour: RAL 7035 light grey, doors RAL 5005 signal blue

Technical specifications:

Voltage:	Volt/Hertz	400 / 50
(other voltage against extra cost)		
Range of cutting speed shift transmission:	m/min.	27-142 and 410-2200
Range of cutting speed flange bearing:	m/min.	500-2000
Wheel diameter:	mm	630
Table size:	mm	740 x 785
Max. payload table:	kg	250
Throat width:	mm	605
Throat height:	mm	460
Motor power:	kW	5.5
	Volt/Hertz	400/690 / 50
	1/min	1500
Dimensions L x W x H:	mm	1820 x 970 x 2560
Net weight:	approx. kg	1750

Optionally: Bandsaw in reinforced design

- Drive: 11 kW
- Max. sawblade width: 34mm
- Reinforced flange bearing and reinforced hydraulic driven slide for sawblade tension
- Range of cutting speed shift transmission: 30-180 m/min. und 342-2000 m/min.,
Range of cutting speed flange bearing: 500-2000 m/min.

STEEL AND METAL BANDSAW MACHINES

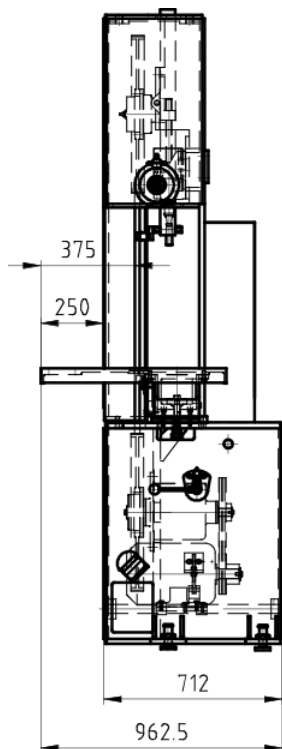
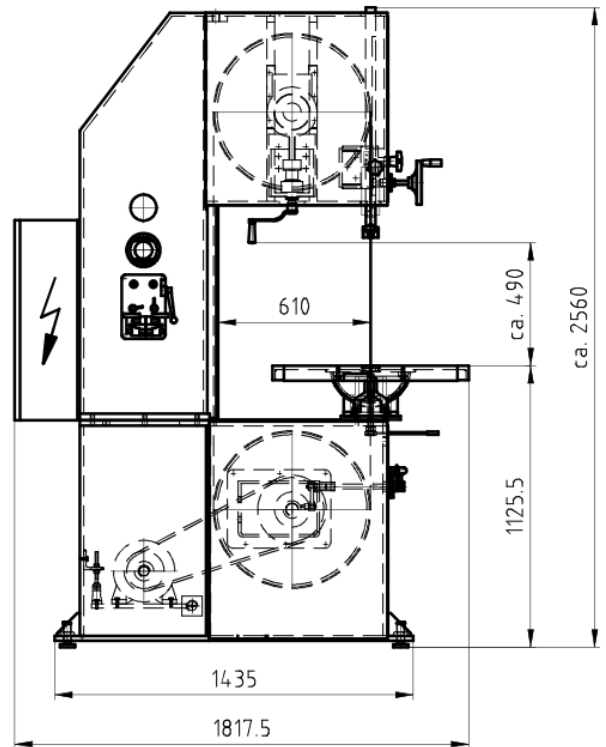
MÖSSNER REKORD SSF630



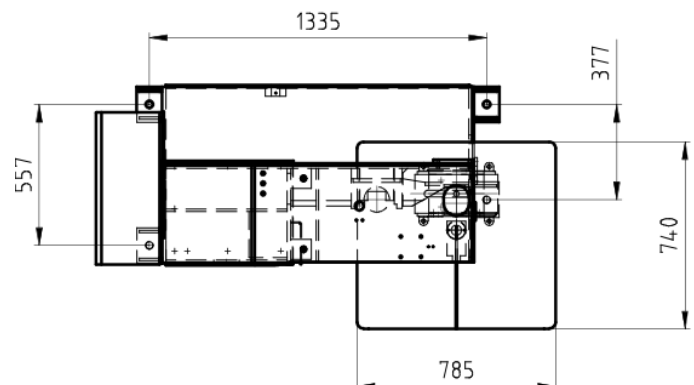
Product pictures / drawings



Picture shows special equipment



Top view



STEEL AND METAL BANDSAW MACHINES

MÖSSNER REKORD SSF801



Technical details:

- Bandsaw machine column in stable grey cast construction
- Cutting speed infinitely variable by shift transmission, frequency converter and AC motor
- Mechanical band tension device with hydraulic indication
- Work table inclinable (to the right side approx. 30° and to the left side approx. 15°)
- Exchangeable aluminium wheels with vulcanized hard rubber coating
- Swivelling upper wheel
- Complete electrical execution according to the usual VDE regulations
- Position switch for safety of the protection doors
- Jaw guides for saw blades with one pair hard metal fitted guide inserts for 13 mm width and 0,9 mm thickness of blade (other dimensions by request)
- Special roller guidance with one set guidance rings for 27 mm wide saw blade
- Emergency push-button
- 1 bi-metal saw blade
- 1 set of operation tools
- Machine according to the valid regulations and with CE-mark
- Colour: RAL 7035 light grey, doors RAL 5005 signal blue

Technical specifications:

Voltage:	Volt/Hertz	400 / 50
(other voltage against extra cost)		
Range of cutting speed:	m/min.	26-180 and 290-2000
Wheel diameter:	mm	800
Table size:	mm	960 x 1000
Max. payload table:	kg	750
Throat width:	mm	785
Throat height:	mm	670
Motor power:	kW	11
	Volt/Hertz	400/690/50
	1/min	1500
Dimensions L x W x H:	mm	2240 x 1080 x 3000
Net weight:	approx. kg	2300

STEEL AND METAL BANDSAW MACHINES

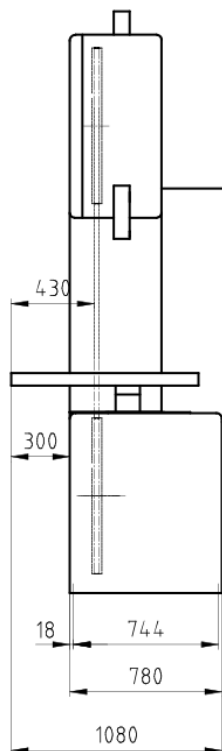
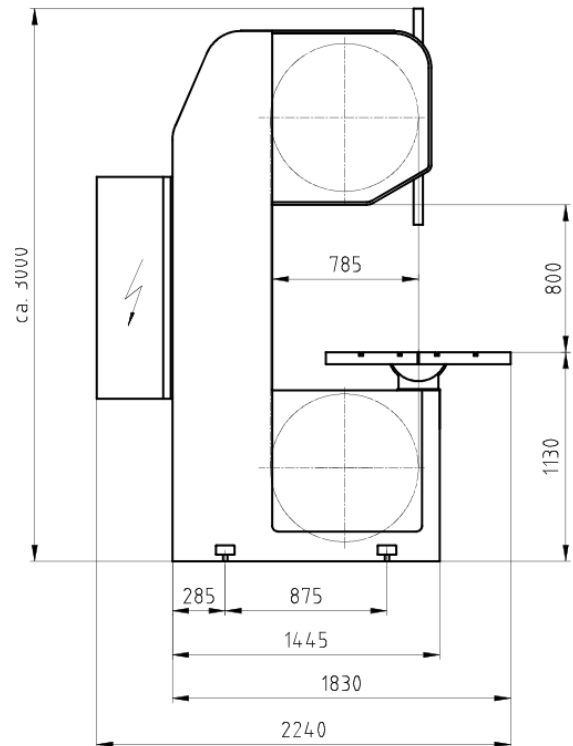
MÖSSNER REKORD SSF801



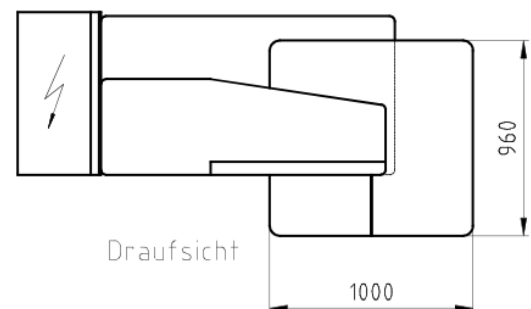
Product pictures / drawings



Picture shows special equipment



Top view



Draufsicht

STEEL AND METAL BANDSAW MACHINES

MÖSSNER REKORD SSF1600



Technical details:

- Bandsaw machine column in stable steel construction
- Cutting speed infinitely variable by shift transmission, frequency converter and AC motor or with flange bearing and frequency converter
- Mechanical band tension device with hydraulic indication
- Work table inclinable (to the right side approx. 30° and to the left side approx. 15°)
- Exchangeable aluminium wheels with vulcanized hard rubber coating
- Swivelling upper wheel
- Complete electrical execution according to the usual VDE regulations
- Position switch for safety of the protection doors
- Jaw guides for saw blades with one pair hard metal fitted guide inserts for 13 mm width and 0,9 mm thickness of blade (other dimensions by request)
- Roller guidance for saw blades with one set rollers for 20 mm width of saw blade
- 1 bi-metal saw blade
- 1 set of operating tools
- Machine according to the valid regulations and with CE-mark
- Colour: RAL 7035 light grey, doors RAL 5005 signal blue

Technical specifications:

Voltage:	Volt/Hertz	400 / 50
(other voltage against extra cost)		
Range of cutting speed shift transmission:	m/min.	22-150 and 338-2280
Range of cutting speed flange bearing:	m/min.	500-2000
Wheel diameter:	mm	520
Table size:	mm	740 x 785
Max. payload table:	kg	250
Throat width:	mm	1600
Throat height:	mm	400
Motor power:	kW	5.5
	Volt/Hertz	400/690/50
	1/min	1500
Dimensions L x W x H:	mm	3100 x 1060 x 2320
Net weight:	approx. kg	2050

STEEL AND METAL BANDSAW MACHINES

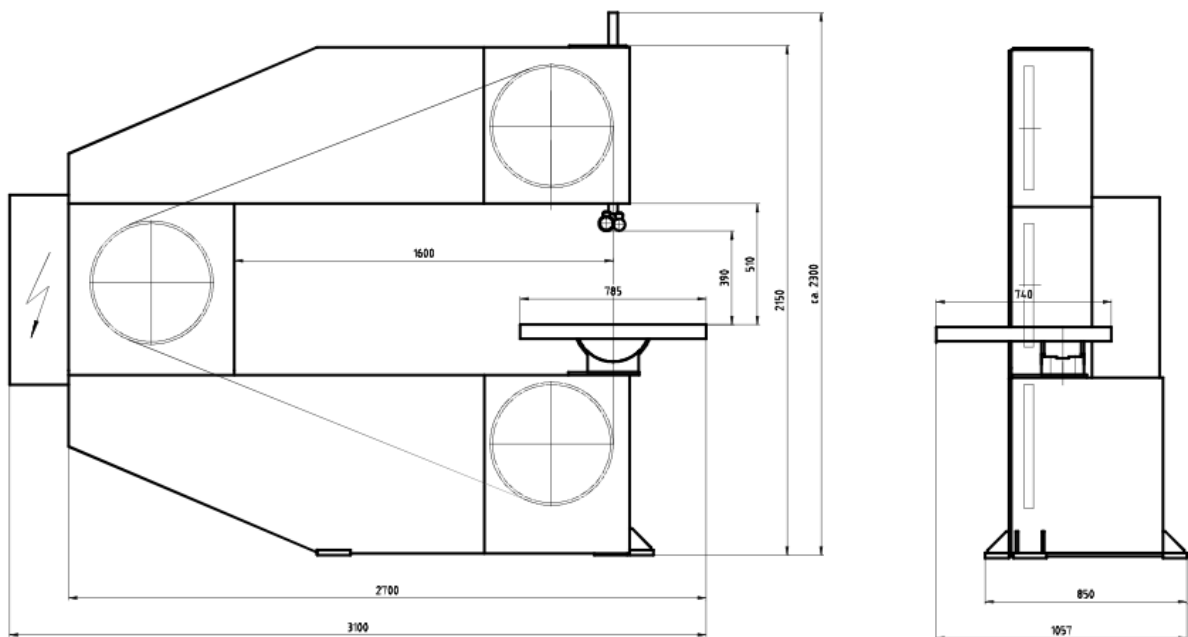
MÖSSNER REKORD SSF1600



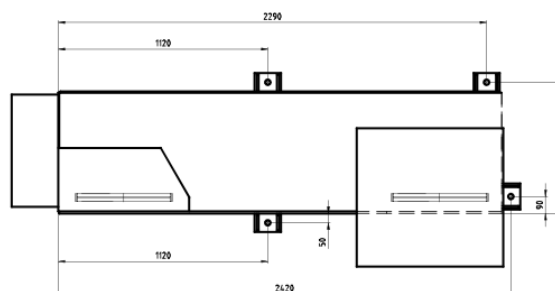
Product pictures / drawings



Picture shows special equipment



Top view



STEEL AND METAL BANDSAW MACHINES

SPECIAL EQUIPMENT



Butt welder

Butt welder EBS for sawblades, incl. shear and grinding motor.

Available EBS types:

- ⇒ For bandsaw type SSF420:
EBS16 for **max. 16 mm** sawblade width
- ⇒ For bandsaw types SSF520, SSF630, SSF1600:
EBS 25 for **max. 25 mm** sawblade width



SAWBLADE GUIDANCE

(dimensions depending on sawblade)

Sawblade guidance

Sawblade jaw guides with exchangeable carbide-tipped guide inserts, available in different sizes.



Guide rollers

Sawblade roller guidance for cutting speeds from 250 m/min., available in different sizes.



Special roller guidance for melting cuts

Special roller guidance for melting cuts with 1 pair guidance rings for 20 mm wide sawblades (other sizes available on request).

STEEL AND METAL BANDSAW MACHINES

SPECIAL EQUIPMENT



SAFETY EQUIPMENT

Emergency push-button

Additional pedal switch for emergency stop.



Safety magnetic brake upper wheel

Automatic braking of the upper wheel with safety magnetic brake in case of emergency switch off of the machine.

HELPFUL EQUIPMENT

Straight cutting device

(not available with feed table)

The straight cutting device is attached to the working table by means of 4 pins.

The feed can be done manually.

Following cuts can be done:

- Cuts with angle up to 45° by means of the angle stopper (adjustable to mitre)
- Cuts with length up to 230 mm by means of the adjustable length stopper
- Depth of cut can be limited with another stopper

Technical data:

Size: 400 x 400 mm

Feed way: 240 mm



Round cutting device

Round cutting device for cutting of rounds up to Ø 580 mm.



STEEL AND METAL BANDSAW MACHINES

SPECIAL EQUIPMENT



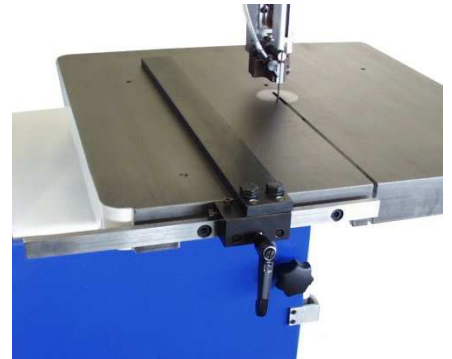
HELPFUL EQUIPMENT

Parallel ledger

Parallel ledger consisting of:

- Scaled guide bar
- Guide cone with clamping
- Stopper lineal
- Adjusting range depending on machine type

Type SSF420	up to 290mm
Type SSF520/SSF630/SSF1600	up to 390mm
Type SSF801	up to 550mm



Workpiece holder

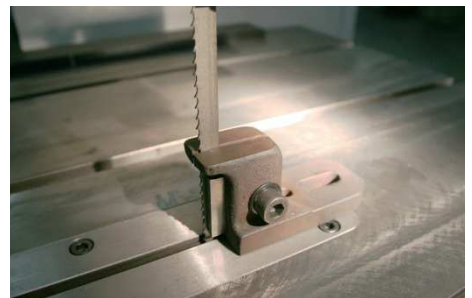
Workpiece holder for safe and exact guiding of the workpiece.



Cutting support device

The cutting support device is used to cut thin sheets with thickness up to approx. 6 mm.

Due to the small contact surface the sheet is prevented from vibrating and thus minimises the risk that teeth of sawblade break.



STEEL AND METAL BANDSAW MACHINES

SPECIAL EQUIPMENT



FEED TABLES STANDARD BANDSAW MACHINES

Feed tables

- Feed table with 4 T-grooves and wear parts
- Feed way depending on machine type
- Work table inclinable, to the right side approx. 8° and to the left side approx. 14°
- Instead of usual table execution

Available versions:

- Manual feed table with fixing (not available for type SSF801)
- Manual feed table with lead screw
- Electric feed table with servo motor and ball screw
- Electric feed table with servo motor, ball screw and load loop

In case an electric feed table is chosen for bandsaw type SSF420 the machine is additionally equipped with mechanic band tension device with hydraulic indication. Starting from size SSF520 the mechanic band tension is serially included.

<u>Feed way / Table sizes:</u>	Feed way approx.	Table size approx.
SSF420	230 mm	600x700 mm
SSF520, SSF630, SSF1600	350 mm	830x790 mm
SSF801	500 mm	1020x1000 mm

Tables in other sizes can be quoted on request.

Examples:



Manual feed table SSF420, with lead screw



Electric feed table SSF420

STEEL AND METAL BANDSAW MACHINES

SPECIAL EQUIPMENT



OTHERS

Halogen lamp

Halogen lamp for lighting of the working area.



Minimum spray device

Minimum spray device for lubrication of saw blade with thin oil

Consisting of:

- 1 spray head
- pressure container for 1 l content (lubricant not included)



Mechanic band tension device

(serially included starting from size SSF520)

Mechanic band tension device with hydraulic indication instead of standard band tension device. Incl. switch-off of drive in case of sawblade breakage.



Blowing off device

Blowing off of chips at the sawblade.
Pressure air provided by customer.



STEEL AND METAL BANDSAW MACHINES

SPECIAL EQUIPMENT



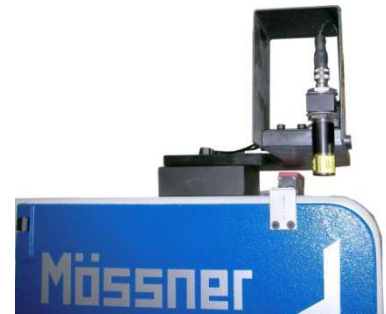
OTHERS

Alignment with laser

For exact positioning a laser beam projects a laser beam on the surface of the workpiece. This beam points out the cutting channel.

Used laser:

Helium-neon-laser with a prefixed line-optic, not dangerous for the eye (corneal reflex).



Connection piece for suction

Suction of chips at two points: lower sawblade guidance and lower wheel-box. Joined to 1 suction point for connection to suction system (by customer).

Design:

- Funnel with connection pieces under the working table, at the lower sawblade guidance
- Connection pieces in the lower wheel-box
- Housing of the drive wheel
- Diameter of the connecting pieces: 80 mm



Hydraulic sawblade tension

- Tension is activated by push button
- In case the saw blade tensioning drops / loosens the pre-set sawblade tension resets automatically
- When the machine is turned off, residual tension remains, to prevent the saw blade from sliding off the wheel



Swivelling control panel

Control panel with two pivotal points:

- Pivotal point 1 at the saw throat
- Pivotal point 2 at the operator's panel

The most important operating keys are integrated in the control panel. The main switch remains in the control cabinet.

Height of bottom edge operator's panel 1400 mm.



GIESSEREITECHNIK / FOUNDRY TECHNOLOGY

Sägen, Entkernen, Entgraten, Kühlen, Bearbeiten
Degating, decoring, deburring, cooling, finishing

ALUMINIUM / ALUMINIUM

Sägen von Barren, Blöcken und Platten
Cutting of slabs, ingots, billets and plates

ABRASIVE MATERIALIEN / ABRASIVE MATERIAL

Bandsägemaschinen für Glas, Silizium, Keramik und Hartmetall
Bandsaw equipment for glass, silicon, ceramic, carbide metal

NUKLEARTECHNIK / NUCLEAR TECHNOLOGY

Rückbau kerntechnischer Anlagen
Dismantling of nuclear reactors

STANDBANDSÄGEMASCHINEN STANDARD BANDSAW MACHINES



August Mössner GmbH + Co. KG
Hohenstaufenstraße 3
D-73569 Eschach, Germany

Phone +49 (0)7175 99806-0
Fax +49 (0)7175 99806-35
www.moessner-kg.de
post@moessner-kg.de