

STEEL AND METAL BANDSAW MACHINES Mössner REKORD



You define the challenge.
We build the solution.

MÖSSNER BANDSAW MACHINES

100 YEARS OF EXPERIENCE IN SAWING

For good reason, Mössner band saws are used in all industrial sectors to solve a wide variety of sawing and cutting problems.

Characteristic of all Mössner band saws are stable, low-vibration machine bodies; a powerful yet efficient drive; and robust mechanics, electronics, and workmanship.

This guarantees smooth operation, long service life, and durability.

Mössner REKORD series machines are designed and manufactured exclusively at our plant in Eschach and represent quality "Made in Germany." Our band saws are universally applicable and, thanks to a wide range of accessories and custom-made components, so flexible that they can be specifically equipped to meet your requirements.

Do you have unusual dimensions, workpieces, or materials? We would be happy to test your workpieces in our testing department.

Our goal is to find the optimal solution for your needs and to make our band saw as economical as possible with regard to the tools and special accessories used.

Our staff will be happy to advise you in detail; simply contact us!

Your contact persons

Standard machines



Jorge Ruelas
Sales International

✉ jorgeruelas@moessner-kg.de
☎ +49 (0)7175/99806-30



August Mössner GmbH + Co. KG
Hohenstufenstraße 3
73569 Eschach

☎ Telephone: +49 7175 99806-0
☎ Telefax: +49 7175 99806-41 🌐 Website: www.moessner-kg.de

Special machines



Simon Lojewski
Head of Sales

✉ SimonLojewski@moessner-kg.de
☎ +49 (0)7175/99806-82



Johannes Schulz
Sales D-A-CH region

✉ JohannesSchulz@moessner-kg.de
☎ +49 (0)7175/99806-12



Philip Lang
Sales Europe

✉ PhilipLang@moessner-kg.de
☎ +49 (0)7175/99806-50

Spare parts



Simone Markowetz
Sales

✉ SimoneMarkowetz@moessner-kg.de
☎ +49 (0)7175/99806-43



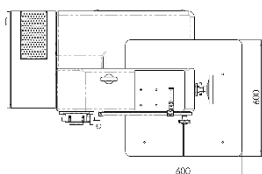
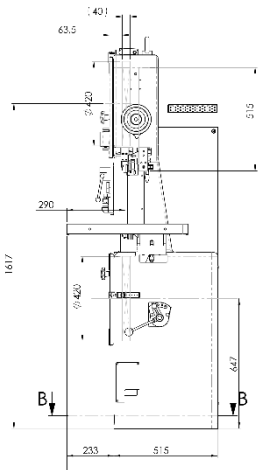
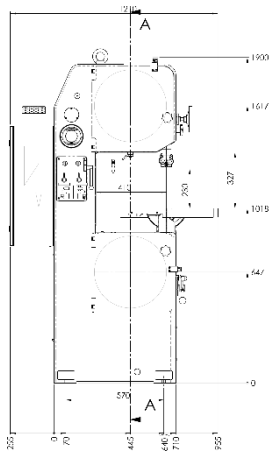
Eva Krieg
Sales

✉ EvaKrieg@moessner-kg.de
☎ +49 (0)7175/99806-64

PRODUCT PORTFOLIO

Bandsaw type	Cutting speed m/min.	Standard tables		Max. Throat		Sizes Bandsaw mm	Motor power kW
		Size mm	Load max. kg	Height mm	Width mm		
SSF 420 4-speed transmission	12-2000	600 x 600	150	230	410	L 1215 W 750 H 1860	2,2
SSF 520 2-speed transmission	22-150 and 338-2280	740 x 785	250	520	510	L 1565 W 970 H 2400	5,5
Flange bearing	500-2000						
SSF 630 2-speed transmission	22-150 and 338-2280	740 x 785	250	460	605	L 1820 W 970 H 2550	5,5
Flange bearing	500-2000						
SSF 630 verstärkt 2-speed transmission	30-180 and 342-2000	740 x 785	250	460	605	L 1820 W 970 H 2550	11
Flange bearing	500-2000						
SSF 801 2-speed transmission	26-180 and 290-2000	960 x 1000	750	670	785	L 2240 W 1080 H 2900	11
Flange bearing	500-2000						
SSF 1600 2-speed transmission	22-150 and 338-2280	740 x 785	250	400	1600	L 3100 W 1060 H 2150	5,5
Flange bearing	500-2000						

MÖSSNER REKORD SSF 420



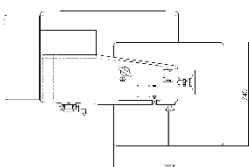
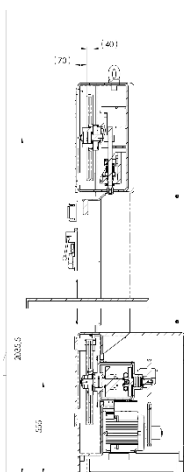
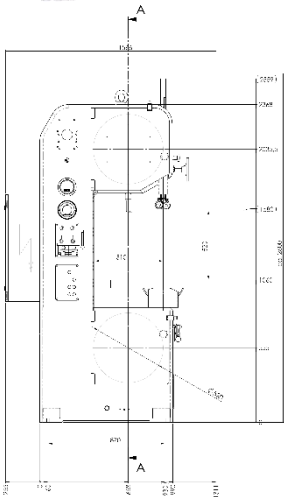
Technical details:

- Bandsaw machine column in stable grey cast construction
- Cutting speed adjustable via frequency converter and three-phase motor with potentiometer
- 4-speed manual transmission
- Sawblade tension indication
- Tilttable work-table – 30 ° to the right, 15 ° to the left
- Exchangeable aluminium wheels with hard rubber coating
- Upper wheel adjustable
- Safety door switches on wheel doors
- Saw blade guide selectable:
1 set of jaw guides or 1 set of roller guides
- Possible sawblade dimensions
min. 6 mm x 0,9 mm to max. 13 mm x 0,9 mm
- Saw blade length 3260 mm
- 1 bi-metal saw blade
- 1 tool set
- The technical execution of our product complies with the machinery directive 2006/42/EG and is provided with CE mark
- Complete electrical design according to VDE
- Paint: RAL 7035 light grey, doors RAL 5005 signal blue

Technical specifications:

Voltage:	Volt/Hertz	400/50
(Other voltages at extra charge)		
Cutting speed range transmission:	m/min	12-2000
Wheel diameter:	mm	420
Table size:	mm	600 x 600
Table height:	mm	1020
Max. table payload:	kg	150
Cutting width:	mm	410
Cutting height:	mm	230
Motor power:	kW	2,2
	Volt/Hertz	230/400/50
	1/min	1500
Dimensions L x W x H:	mm	1215 x 750 x 1860
Net weight approx:	kg	680

MÖSSNER REKORD SSF 520



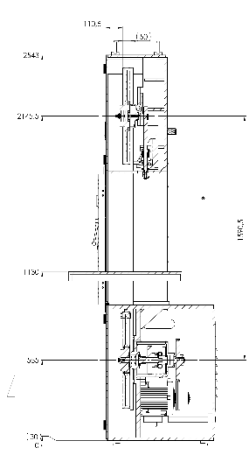
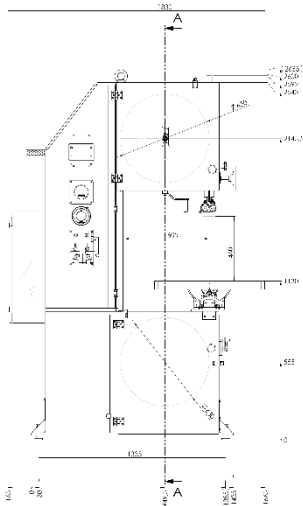
Technical details

- Bandsaw machine column in stable grey cast construction
- Cutting speed adjustable via frequency converter and three-phase motor with potentiometer, 2-speed manual transmission or cutting speed infinitely variable with flange bearing and frequency converter
- Manual sawblade tension device with hydraulic indication
- Tilttable work-table – 30 ° to the right, 15 ° to the left
- Exchangeable aluminium wheels with hard rubber coating
- Upper wheel adjustable
- Safety door switches on wheel doors
- Saw blade guide selectable:
 - 1 set of jaw guides or 1 set of roller guides
- Possible saw blade dimensions:
 - Manual transmission: min. 6 mm x 0,9 mm to max. 20 mm x 0,9 mm
 - Flange bearing: min. 6 mm x 0,9 mm to max. 27 mm x 0,9 mm
- Saw blade length 4600 mm
- 1 bi-metal saw blade
- 1 tool set
- The technical execution of our product complies with the machinery directive 2006/42/EG and is provided with CE mark
- Complete electrical design according to VDE
- Paint: RAL 7035 light grey, doors RAL 5005 signal blue

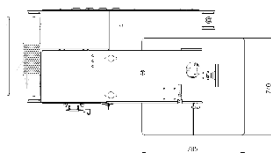
Technical specifications:

Voltage:	Volt/Hertz	400/50
(Other voltages at extra charge)		
Cutting speed range transmission:	m/min	22-150 and 338-2280
Cutting speed range flange bearing:	m/min	500-2000
Wheel diameter:	mm	520
Table size:	mm	740 x 785
Table height:	mm	1058
Max. table payload:	kg	250
Cutting width:	mm	510
Cutting height:	mm	520
Motor power:	kW	5,5
	Volt/Hertz	400/690/50
	1/min	1500
Dimensions L x W x H:	mm	1565 x 970 x 2400
Net weight approx:	kg	1100

MÖSSNER REKORD SSF 630



A-A



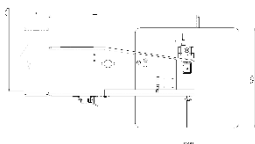
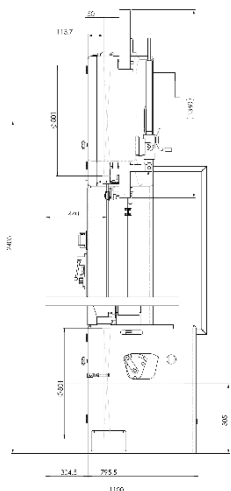
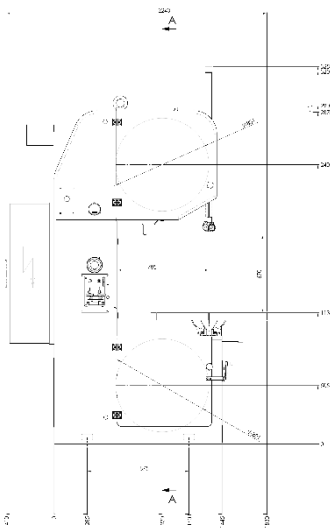
Technical details

- Bandsaw machine column in stable steel construction
- Cutting speed adjustable via frequency converter and three-phase motor with potentiometer, 2-speed manual transmission *or* cutting speed infinitely variable with flange bearing and frequency converter
- Manual sawblade tension device with hydraulic indication
- Tilttable work-table – 30 ° to the right, 15 ° to the left
- Exchangeable aluminium wheels with hard rubber coating
- Upper wheel adjustable
- Safety door switches on wheel doors
- Saw blade guide selectable
 - 1 set of jaw guides or 1 set of roller guides
- Possible saw blade dimensions:
 - Manual transmission: min. 6 mm x 0,9 mm to max. 20 mm x 0,9 mm
 - Flange bearing: min. 6 mm x 0,9 mm to max. 27 mm x 0,9 mm
- Saw blade length 5180 mm
- 1 bi-metal saw blade
- 1 tool set
- The technical execution of our product complies with the machinery directive 2006/42/EG and is provided with CE mark
- Complete electrical design according to VDE
- Paint: RAL 7035 light grey, doors RAL 5005 signal blue

Technical specifications:

Voltage:	Volt/Hertz	400/50
(Other voltages at extra charge)		
Cutting speed range transmission:	m/min	22-150 and 338-2280
Cutting speed range flange bearing:	m/min	500-2000
Wheel diameter:	mm	630
Table size:	mm	740 x 785
Table height:	mm	1125
Max. table payload:	kg	250
Cutting width:	mm	605
Cutting height:	mm	460
Motor power:	kW	5,5
	Volt/Hertz	400/690/50
	1/min	1500
Dimensions L x W x H:	mm	1820 x 970 x 2550
Net weight approx:	kg	1750

MÖSSNER REKORD SSF 801



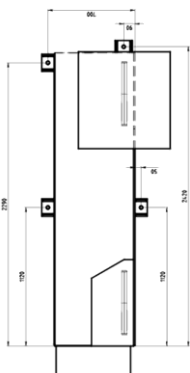
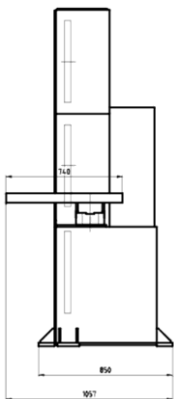
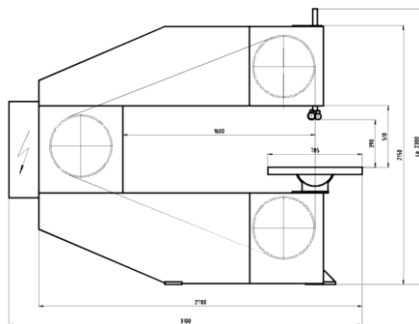
Technical details

- Bandsaw machine column in stable grey cast construction
- Cutting speed adjustable via frequency converter and three-phase motor with potentiometer, 2-speed manual transmission or cutting speed infinitely variable with flange bearing and frequency converter
- Manual sawblade tension device with hydraulic indication
- Tilttable work-table – 30 ° to the right, 15 ° to the left
- Exchangeable aluminium wheels with hard rubber coating
- Upper wheel adjustable
- Safety door switches on wheel doors
- Swiveling control panel
- Saw blade guide selectable:
 - 1 set of jaw guides or 1 set of roller guides
- Possible saw blade dimensions:
 - min. 13 mm x 0.9 mm to max. 34 mm x 1.1 mm
- Saw blade length 6400 mm
- 1 Bi-Metall-Sägeband
- 1 tool set
- The technical execution of our product complies with the machinery directive 2006/42/EG and is provided with CE mark
- Complete electrical design according to VDE
- Paint: RAL 7035 light grey, doors RAL 5005 signal blue

Technical specifications:

Voltage:	Volt/Hertz	400/50
(Other voltages at extra charge)		
Cutting speed range transmission:	m/min	26-180 and 290-2000
Cutting speed range flange bearing:	m/min	500-2000
Wheel diameter:	mm	800
Table size:	mm	960 x 1000
Table height:	mm	1130
Max. table payload:	kg	750
Cutting width:	mm	785
Cutting height:	mm	670
Motor power:	kW	11
	Volt/Hertz	400/690/50
	1/min	1500
Dimensions L x W x H:	mm	2240 x 1080 x 2900
Net weight approx:	kg	2300

MÖSSNER REKORD SSF 1600



Technical details

- Bandsaw machine column in stable steel construction
- Cutting speed adjustable via frequency converter and three-phase motor with potentiometer, 2-speed manual transmission or cutting speed infinitely variable with flange bearing and frequency converter
- Manual sawblade tension device with hydraulic indication
- Tiltable work-table – 30 ° to the right, 15 ° to the left
- Exchangeable aluminium wheels with hard rubber coating
- Upper and middle wheels adjustable
- Safety door switches on wheel doors
- Swiveling control panel
- Saw blade guide selectable:
 - 1 set of jaw guides or 1 set of roller guides
- Possible saw blade dimensions:
 - Manual transmission: min. 6 mm x 0,9 mm to max. 20 mm x 0,9 mm
 - Flange bearing: min. 6 mm x 0,9 mm to max. 27 mm x 0,9 mm
- Saw blade length 6620 mm
- 1 tool set
- The technical execution of our product complies with the machinery directive 2006/42/EG and is provided with CE mark
- Complete electrical design according to VDE
- Paint: RAL 7035 light grey, doors RAL 5005 signal blue

Technical specifications:

Voltage: (Other voltages at extra charge)	Volt/Hertz	400/50
Cutting speed range transmission:	m/min	26-180 and 290-2280
Cutting speed range flange bearing:	m/min	500-2000
Wheel diameter:	mm	800
Table size:	mm	960 x 1000
Table height:	mm	1130
Max. table payload:	kg	750
Cutting width:	mm	1600
Cutting height:	mm	400
Motor power:	kW	5,5
	Volt/Hertz	400/690/50
	1/min	1500
Dimensions L x W x H:	mm	2240 x 1080 x 2150
Net weight approx:	kg	2150

Special equipment

Butt welder

Butt welder EBS for sawblades, incl. shear and grinding motor.

Available types:

- For type SSF 420:
EBS 16 for max. 13 mm sawblade width
- For types SSF 520, SSF 630, SSF 1600:
EBS 25 for max. 20 mm sawblade width



E

Electronic annealing function for welding unit

Electronic annealing function for stepless adjustment of the annealing voltage for convenient treatment of the weld seam, to reduce stresses in the material and temper the weld area (for operating voltages up to 400 volts, 50 hertz).

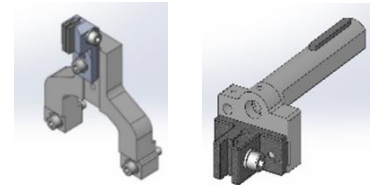
Sawblade guidance (dimensions depending on sawblade)

Jaw guides with inserts

Bracket jaw guides bottom and top including carbide-tipped guide inserts for bracket jaw guides

Inserts for jaw guides

Carbide-tipped guide inserts for jaw guides

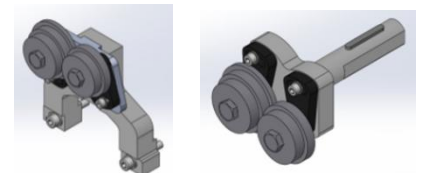


Roller guides

Roller guides including guide rollers used for cutting speeds starting at 250 m/min.

Guide rollers

1 set = 2 pieces with rim, 2 pieces without rim



Safety equipment

Emergency push-button

Additional foot switch on the lower part of the machine for emergency stop.



Magnetic brake upper wheel

Automatic braking of the upper wheel by magnetic brake in case of loss of tension or saw blade breakage.

When applying the magnetic brake upper wheel for a SSF 420, a manual saw band tensioning device with hydraulic indicator is also required.



Special equipment

Helpful equipment

Straight cutting device

(not available with feed table)

The straight cutting device is placed on the worktable with 4 pins. The feed is manual. By means of a mitre-adjustable feed angle and an adjustable cross-cut fence, cuts can be made at an angle of up to 45° and in lengths of up to 230 mm. The cutting depth can also be limited with another adjustable stop.

Technical data:

Size: 400 x 400 mm
Feed way: 240 mm



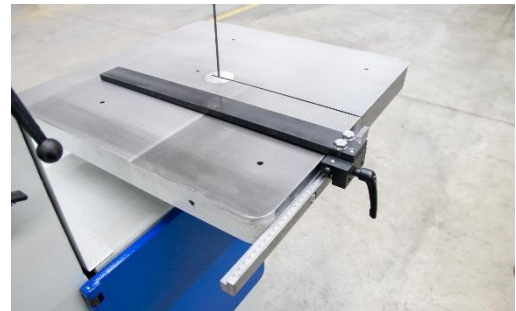
Parallel ledger

Parallel ledger consisting of:

- Scaled guide bar
- Guide cone with clamping
- Stopper lineal

Maximum adjustment range of ledger:

Type SSF 420	up to approx. 290mm
Type SSF 520/SSF 630/SSF 1600	up to approx. 390mm
Type SSF 801	up to approx. 550mm



Workpiece holder

The workpiece holder enables precise and safe guidance of the workpiece, as the operator's hands remain outside the saw band area.



Cutting support device

The cutting support device is used for sawing thin sheets up to approximately 6 mm thick. Its small contact surface prevents the sheet from vibrating, thus reducing the risk of teeth breaking off the saw blade. It also provides a more secure grip for the operator.

An additional insert for jaw guide is required.



Special equipment

Feed tables standard bandsaw machines

Feed tables

- Feed table with 4 T-grooves
- Feed way depending on machine type
- Work table inclinable, to the right side approx. 8° and to the left side approx. 14°(instead of usual table execution)

Available versions:

- Manual feed table with locking mechanism (not available for type SSF 801)
- Manual feed table with lead screw
- Electric feed table with servo motor and ball screw

If an electric feed table is selected, the SSF 420 band saw machine is supplied incl. manual band tensioning device with hydraulic display.
From size SSF 520 onwards, this device is already serially included in the band saw.

Feed way/ Table sizes:	Feed way approx.	Table size approx.
SSF 420	230 mm	600x700 mm
SSF 520, SSF 630, SSF 1600	350 mm	830x790 mm

Tables in other sizes can be quoted on request.



Special equipment feed tables

One-axis-positioning control for electrical feed tables

The desired feed path is entered via a keypad.
The actual value can be read on a digital display.
A resolver is integrated for path measurement. The feed motion is switched off when the set dimension is reached.
A maximum of 10 programs, each with 10 lines, can be saved.

The band saw's control system allows programming of different X-axis positions with varying feed rates. This is advantageous for sawing different material thicknesses on a single component.



Special equipment

Others

LED lamp

LED lamp for lighting of the working area.

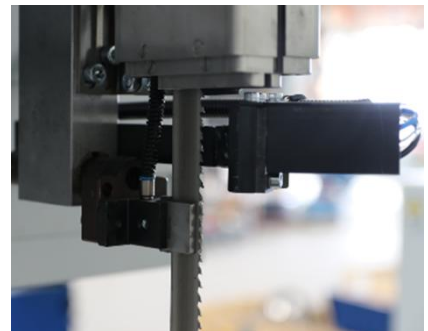


Minimum spray device

Lubrication of the saw band by a minimum spray device.

Consisting of:

- 1 spray head
- Pressure container for 1 l content (lubricant not included)



Manual saw band tensioning device with hydraulic indicator

(only for SSF 420 - included in model SSF 520 and up)

Manual saw band tensioning device with hydraulic indicator instead of the usual saw band tension indicator, including switching off the drives in case of saw band breakage.



Blowing off device

Blowing off the chips at the saw blade area.

This makes the cutting line more visible.

(Pressure air provided by the customer)



Special equipment

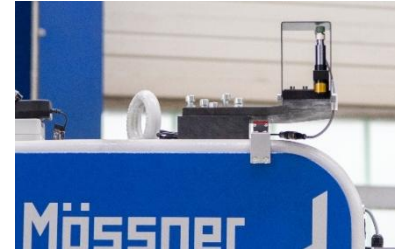
Others

Alignment with laser

For exact positioning a laser beam projects a laser beam on the surface of the workpiece. This beam points out the cutting channel.

Used laser:

Helium-neon-laser with a prefixed line-optic, not dangerous for the eye (corneal reflex).



Swivelling control panel

(included in type SSF 1600) Control panel with two pivotal points:

- Pivotal point 1 at the saw throat
- Pivotal point 2 at the operator's panel

The most important operating keys are integrated in the control panel. The main switch remains in the control cabinet.

Height of bottom edge operator's panel 1400 mm.



Hydraulic sawblade tension

- Tension is activated by push button
- Should the saw blade tension loosen, the preset sawblade tension resets automatically
- When the machine is turned off, residual tension remains, to prevent the saw blade from sliding off the wheel



Connection piece for suction

Chip extraction at 2 points:

Lower saw blade guide and lower impeller housing. Combined to form 1 extraction point for on-site connection to a dust extraction system.

Design:

- Funnel with connection pieces under the working table, at the lower sawblade guidance
- Connection pieces in the lower wheel-box
- Housing of the drive wheel



Special equipment

Others

Suction unit

(suitable for SSF 420, 520, 630, for SSF 801 on request)

Suction of dust, chips, granulate and fibres.

Design:

- Movable dust remover 170 l
- Rectangular design
- Filter category M
- With manual filter cleaning
- Connection spigot DN 140 mm



Special paint

Instead of Mössner's standard paint finish in RAL 7035 light grey and doors in RAL 5005 signal blue, the band saw is painted in a customer-specific RAL color.

Enlarged throat of height only for SSF630 available

Increased vertical reach by 250 mm to 710 mm.

Special voltage

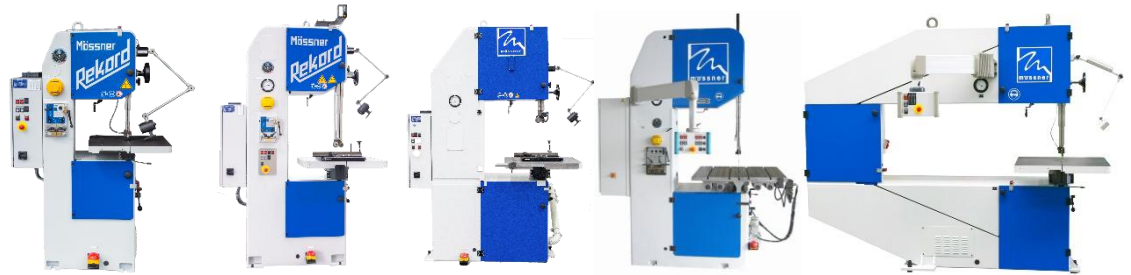
Instead of the standard operating voltage of 400/50 volts/hertz, the band saw is manufactured with a different, country-specific special voltage.

Special voltage for butt welder

Instead of the standard operating voltage of 400/50 volts/hertz for the butt welder, it is operated with a different, country-specific special voltage.

Price list bandsaw machines

Valid from 01.01.2026 to 30.06.2026



		SSF 420	SSF 520	SSF 630	SSF 801	SSF 1600
Price EUR without butt welder, shear and grinding motor	Shift transmission	19.260,00	29.470,00	37.160,00	62.950,00	43.880,00
	Flange bearing	-	28.670,00	36.360,00	59.800,00	43.080,00
	Shift transmission (reinforced design 11 kW)	-	-	48.310,00	-	-
	Flange bearing (reinforced design 11 kW)	-	-	45.160,00	-	-
Price EUR with butt welder, shear and grinding motor	Shift transmission	21.540,00	31.950,00	39.940,00	On request	46.360,00
	Flange bearing	-	31.150,00	38.840,00	On request	45.560,00
	Shift transmission (reinforced design 11 kW)	-	-	On request	-	-
	Flange bearing (reinforced design 11 kW)	-	-	On request	-	-
Packaging price EUR	Packaging / crate	340,00	510,00	850,00	990,00	1.190,00
	Seaworthy packaging	920,00	1.430,00	2.140,00	2.390,00	On request

Price list special equipment

Valid from 01.01.2026 to 30.06.2026

		SSF 420	SSF 520	SSF 630	SSF 801	SSF 1600
Sawblade guidance (dimensions depending on sawblade) price EUR	Jaw guides including carbide-tipped guide inserts, available in different sizes	525,00	600,00	600,00	-	600,00
	Carbide-tipped guide inserts for jaw guides, available in different sizes, price per pair	112,00				
	Roller guides including guide rollers	910,00	1.160,00	1.160,00	-	1.160,00
	Guide rollers, price per set (1 set = 2 pcs. with rim, 2 pcs. without rim)	580,00	740,00	740,00	-	740,00
	Guidance rings, price per set 1 set = 2 pcs. with rim, 2 pcs. without rim)	-	510,00	510,00	510,00	510,00
Wheels price EUR	Exchangeable aluminum wheels with vulcanized hard rubber coating, price per piece	445,00	510,00	1.420,00	1.420,00	510,00
	Credit for worn wheels, if still usable and returned free of charge (per piece).	160,00	210,00	860,00	860,00	210,00
Safety equipment price EUR	Emergency push-button (included in SSF 801)	260,00				
	Safety magnet brake for undriven wheel	950,00	950,00	950,00	2.150,00	1.910,00
Helpful equipment price EUR	Straight cutting device (not available with feed table)	1.210,00				
	Parallel ledger	615,00	615,00	615,00	-	615,00
	Parallel ledger, One-side bearing	-	-	-	2.640,00	-
	Workpiece holder	135,00				
	Cutting support device (without guide insert)	90,00				
Feed tables with 4 T-grooves. Instead of standard table price EUR	Manual feed table with fixing (230mm feed way)	3.440,00	4.830,00	4.830,00	-	4.830,00
	Manual feed table with lead screw (230mm feed way)	4.880,00	6.860,00	6.860,00	-	6.860,00
	Electric feed table with servo motor and ball screw (230mm feed way)	10.240,00	11.770,00	11.770,00	-	11.770,00
	Feed tables in other sizes	On request				
	One-axis-positioning control for electrical feed tables	4.310,00				

Price list special equipment

Valid from 01.01.2026 to 30.06.2026

	SSF 420	SSF 520	SSF 630	SSF 801	SSF 1600					
Other equipment price EUR	LED lamp					330,00				
	Minimum spray device (lubricant not included)					2.580,00				
	Special grease lubricant in 10 l package (graduated prices available on request)					310,00				
	Manual saw band tensioning device with hydraulic indicator					810,00	-	-	-	-
	Electronic annealing function for welding unit (for voltage until 400 Volt, 50 Hertz)					500,00	500,00	500,00	-	500,00
	Blowing off device					230,00				
	Alignment with laser					1.070,00				
	Swiveling control panel with 2 pivot points					-	2.300,00	2.300,00	2.300,00	2.300,00
	Hydraulic sawblade tension					-	5.790,00	5.790,00	5.790,00	-
	Connection piece for suction					1.700,00	1.700,00	1.700,00	1.700,00	-
	Suction unit					11.310,00	11.310,00	11.310,00	On request	-
	Special colour (instead of standard machine colour)					430,00	560,00	710,00	710,00	860,00
	Enlarged throat of height by 250 mm to 710 mm							2.640,00		
	Special voltage (additional price)					425,00				
	Special voltage for butt welder (additional price)					630,00				
Sawblades	Depending on material to be cut					On request				